

Sentinelles network report from 02/15/2012, n° 2012w06 (data from 02/06/2012 to 02/12/2012)

Influenza-like illness

During the week 2012w06 ranging from 02/06/2012 to 02/12/2012, the Sentinelles network has observed the following situation:

INFLUENZA-LIKE ILLNESS Flu epidemic startup

Sudden fever > 39°C (>102°F) with myalgia and respiratory signs. Using the number of ILI cases, it is possible to estimate the number of cases due to influenza viruses.

Influenza-like illness surveillance

In metropolitan France, last week, the incidence of influenza-like illness seen in general practice was estimated at 273 cases per 100,000 inhabitants (173,500 new cases), above the epidemic threshold (161 cases per 100,000). As Influenza-like illness incidences from last week has been too consolidated above the epidemic threshold, we can confirm the start of the epidemic to 30 January 2012. In 2 weeks 279,000 people would have consulted their General Practitioner.

At the regional level, the highest incidences were noted in: Auvergne (584 cases per 100,000), Provence-Alpes-Côte-d'Azur (546), Rhône-Alpes (395), Nord-Pas-de-Calais (316) and Languedoc-Roussillon (311). The regional data are presented at the end of this newsletter.

Regarding the cases reported last week, the median age was 25 years (5 months to 85 years). Males accounted for 48% of the cases. These cases showed no particular sign of severity: there were no hospitalizations cases reported for influenza-like illness last week.

According to the forecast model based on historical data [1], the level of influenza activity will continue to rise this week

Attributable ratio estimate to the Flu

Using a periodic regression model applied to historical surveillance data, the number of consultations attributable to influenza viruses is estimated each week. This number corresponds to the difference between the observed number of consultations and the number expected under the hypothesis of no influenza circulation, estimated by the periodic regression model. Indeed, ILI consultations can be motivated by other pathogens (details about this estimation are provided on www.sentiweb.fr/?page=methodes).

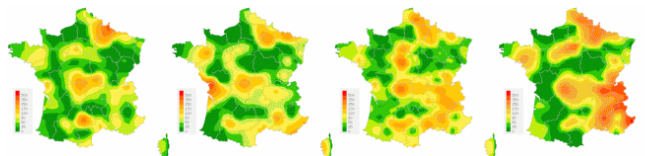
During week 2012s06, we estimated that there were around 116,500 consultations due to influenza viruses seen in general practice [90% Prediction Interval: 71,000 ; 163,000]. In 2 weeks of epidemic, the number of consultations for influenza was estimated at 162,500 [72,000; 253,000].

This estimation is based on ILI cases, according to the Sentinelles network definition, seen by general practitioners. It does not account for cases that did not consult a GP or did not match the definition

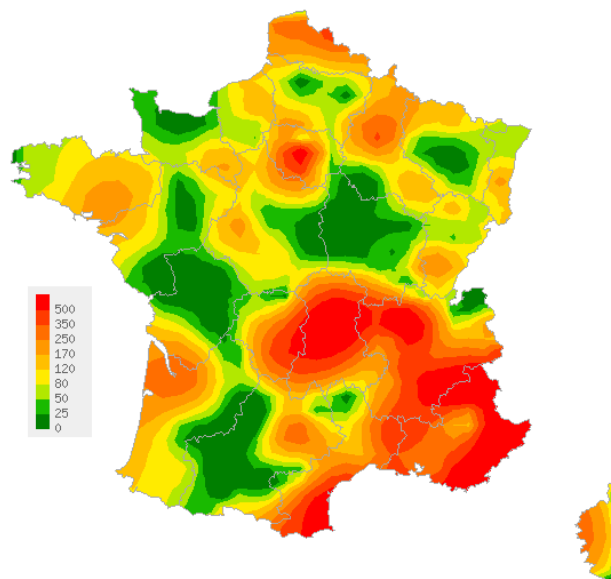
[More information about this surveillance](#)

The Sentinelles network team

Current activity



Consolidated data for the last 4 weeks (2012w02 to 2012w05)



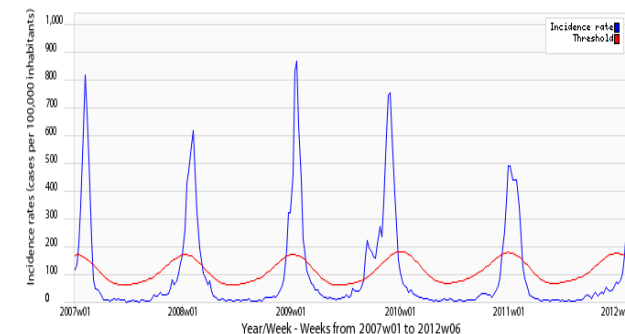
For the week 2012w06

Map of data spatial interpolation.

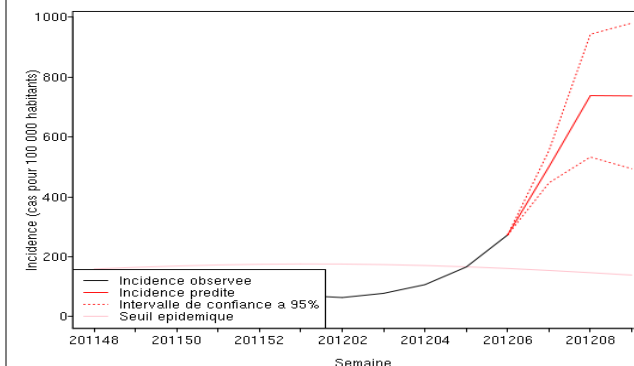
The interpolation is based on the departmental incidence.
[Maps available on Sentiweb: http://www.sentiweb.fr](http://www.sentiweb.fr)

Previsions

Sentinelles Network, Influenza-like illness, France (mainland)



Incidence rate (cases per 100,000 inhabitants) in blue.
In red, the epidemic threshold since 2007
calculated by a periodic regression model
applied to the former observed data (Serfling's method).



Observed incidence in black

Previsions by Method of Analogues in red
(Viboud C, et al. Am J Epidemiol. 2003)

[1] Viboud C, et al. Prediction of the spread of influenza epidemics by the method of analogues. Am J Epidemiol. 2003 Nov 15;158(10):996-1006.

Acute diarrhea

During the week 2012w06 ranging from 02/06/2012 to 02/12/2012, the Sentinelles network has observed the following situation:

ACUTE DIARRHEA

Likely an end for the epidemic of gastroenteritis

Recent acute diarrhea (at least 3 daily watery or nearly so stools, dating less than 14 days) motivating consultation.

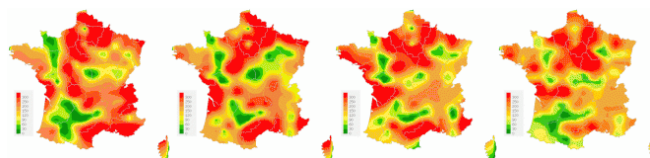
In metropolitan France, last week, the incidence of acute diarrhea seen in general practice was estimated at 253 cases per 100,000 inhabitants (161,000 new cases), slightly **below** the epidemic threshold (263 cases per 100,000). Comprehensive regional data are presented at the end of this newsletter.

As acute diarrhea incidences from the two previous weeks were also consolidated under the epidemic threshold, **this national epidemic of gastroenteritis would be over**. Which would make this epidemic one of the shortest observed by the Sentinelles network, with a single week above the threshold, the week of 2 to 8 January 2012.

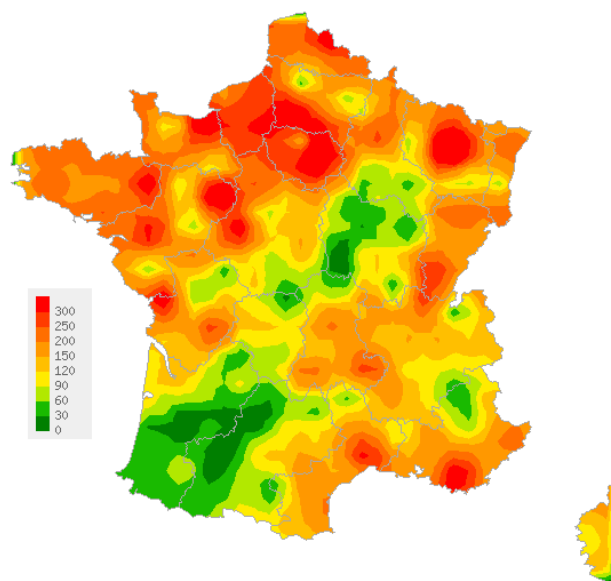
[More information about this surveillance](#)

The Sentinelles network team

Current activity



Consolidated data for the last 4 weeks (2012w02 to 2012w05)



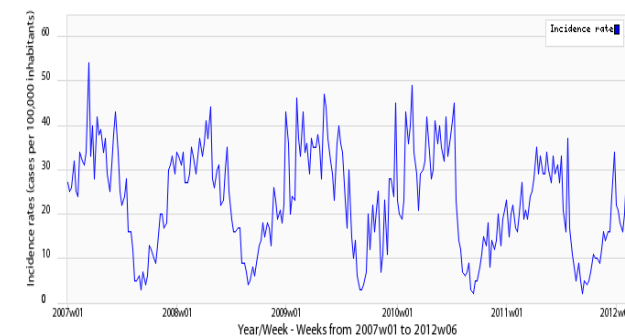
For the week 2012w06

Map of data spatial interpolation.

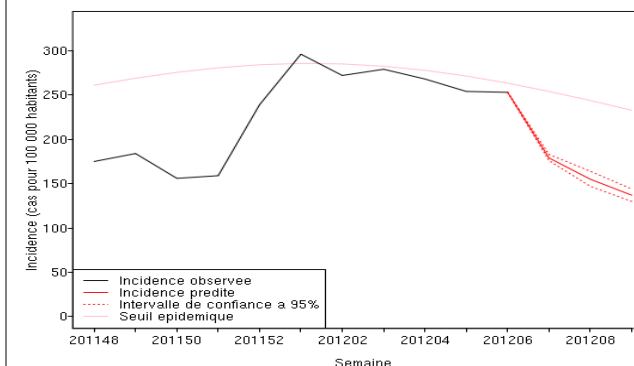
The interpolation is based on the departmental incidence.
Maps available on Sentiweb: <http://www.sentiweb.fr>

Previsions

Sentinelles Network, Chickenpox, France (mainland)



Incidence rate (cases per 100,000 inhabitants) in blue.
In red, the epidemic threshold since 2007
calculated by a periodic regression model
applied to the former observed data (Serfling's method).



Observed incidence in black

Previsions by Method of Analogues in red
(Viboud C, et al. Am J Epidemiol. 2003)

Chickenpox

During the week 2012w06 ranging from 02/06/2012 to 02/12/2012, the Sentinelles network has observed the following situation:

CHICKENPOX Moderate activity

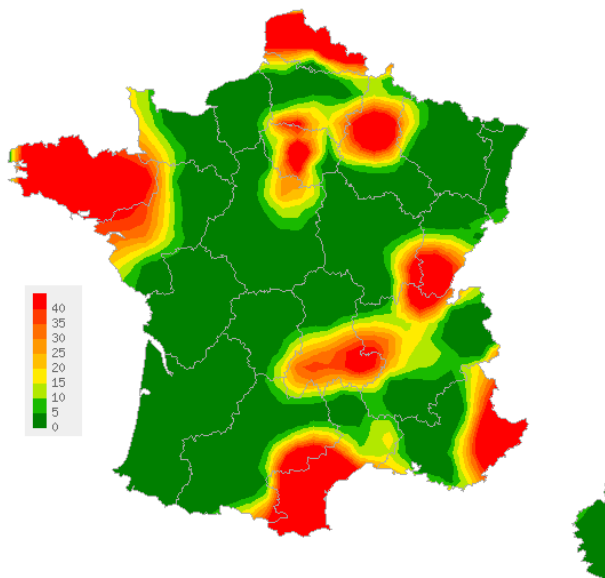
In metropolitan France, last week, the incidence of chickenpox seen in general practice was estimated at 29 cases per 100,000 inhabitants.

Six regional activity clusters were reported, **high** in Nord-Pas-de-Calais (105 cases per 100,000 inhabitants, Bretagne (48) and Languedoc-Roussillon (43), and **moderate** in Ile-de-France (39), Champagne-Ardenne (38) and Provence-Alpes-Côte-d'Azur (25). The complete regional data are presented at the end of this newsletter.

[More information about this surveillance](#)

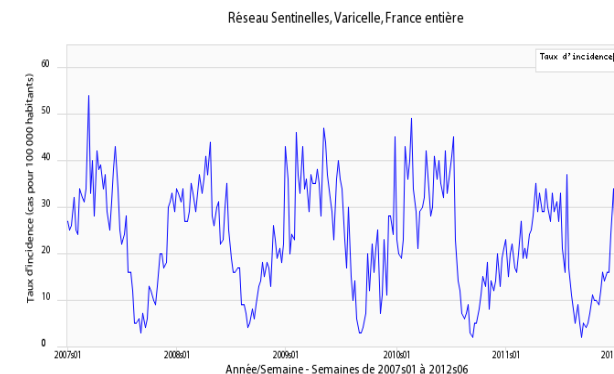
The Sentinelles network team

Current activity



Map of spatial interpolation of data.
The interpolation is based on the departmental incidence.
Maps available on Sentiweb:
<http://www.sentiweb.fr>

Evolution of the national incidence



Incidence rate (cases per 100,000 inhabitants), since 2007

INCIDENCE RATES DURING THE PAST 3 WEEKS IN MAINLAND FRANCE (REGION WEIGHTED ESTIMATES) (NUMBER OF CASES PER 100,000 INHABITANTS)

MAINLAND INCIDENCE RATES	2012w06 (non consolidated data)					2012w05					2012w04				
	incid.	[low.	up.]	min.	max.	incid.	[low.	up]	min.	max.	incid.	[low.	up.]	min.	max.
INFLUENZA-LIKE ILLNESS	273	240	306	30	1026	166	145	188	32	1155	107	89	124	41	868
ACUTE DIARRHEA	253	217	290	0	354	254	226	282	0	415	268	241	294	0	543
CHICKENPOX	29	16	42	0	46	20	12	28	0	43	16	8	24	0	36

INCIDENCE RATES BY REGION DURING THE LAST WEEK 2012w06 (DEPARTEMENT WEIGHTED ESTIMATES) (NUMBER OF CASES PER 100,000 INHABITANTS)

INCIDENCE RATES BY REGION	INFLUENZA-LIKE ILLNESS					ACUTE DIARRHEA				
	incid.	[low.	up.]	min	max	incid.	[low.	up.]	min	max
ALSACE	107	0	219	0	790	154	26	282	0	523
AQUITAINE	193	66	320	0	2612	85	0	173	0	362
AUVERGNE	584	379	789	13	847	201	98	305	0	338
BASSE-NORMANDIE	42	1	83	0	663	202	4	399	0	559
BOURGOGNE	0	0	0	0	1268	0	0	0	0	363
BRETAGNE	138	61	214	11	982	306	187	424	0	434
CENTRE	126	39	213	2	1363	199	78	320	0	412
CHAMPAGNE-ARDENNE	244	125	363	11	1083	173	72	273	0	639
CORSE	197	64	329	0	1586	154	11	296	0	418
FRANCHE-COMTE	109	34	184	3	1490	244	89	399	0	373
HAUTE-NORMANDIE	129	0	321	0	957	295	48	542	0	361
ILE-DE-FRANCE	257	187	328	15	829	271	195	346	0	381
LANGUEDOC-ROUSSILLON	311	168	454	16	1750	262	58	465	0	557
LIMOUSIN	231	0	488	0	1551	83	0	263	0	810
LORRAINE	70	4	135	0	1238	352	0	795	0	468
MIDI-PYRENEES	93	18	168	8	944	91	7	175	0	315
NORD-PAS-DE-CALAIS	316	71	560	9	1036	337	85	588	0	710
PAYS-DE-LA-LOIRE	51	0	104	0	969	228	111	345	0	433
PICARDIE	37	0	117	0	614	185	7	363	0	461
POITOU-CHARENTES	0	0	0	0	1592	228	0	487	0	627
PACA	546	369	724	9	1516	231	96	366	0	332
RHONE-ALPES	395	301	490	9	1464	141	89	194	0	348

INCIDENCE RATES BY REGION	CHICKENPOX				
	incid.	[low.	up.]	min	max
ALSACE	0	0	0	0	118
AQUITAINE	0	0	0	0	75
AUVERGNE	14	0	32	0	45
BASSE-NORMANDIE	0	0	0	0	74
BOURGOGNE	0	0	0	0	82
BRETAGNE	48	3	94	0	71
CENTRE	7	0	21	0	150
CHAMPAGNE-ARDENNE	38	0	84	0	71
CORSE	0	0	0	0	87
FRANCHE-COMTE	16	0	47	0	100
HAUTE-NORMANDIE	0	0	0	0	192
ILE-DE-FRANCE	39	7	72	0	45
LANGUEDOC-ROUSSILLON	43	0	88	0	165
LIMOUSIN	0	0	0	0	186
LORRAINE	0	0	0	0	40
MIDI-PYRENEES	0	0	0	0	68
NORD-PAS-DE-CALAIS	105	0	236	0	281
PAYS-DE-LA-LOIRE	12	0	36	0	102
PICARDIE	0	0	0	0	72
POITOU-CHARENTES	0	0	0	0	181
PACA	25	0	53	0	84
RHONE-ALPES	18	0	36	0	47

Legend	
incid.	Incidence rates
low.	Lower limit of the confidence interval
up.	Upper limit of the confidence interval
min.	Minimum value of the reference week since 1984
max.	Maximum value of the reference week since 1984
**	non interpretable results

"Réseau Sentinelles (RS)"
Unité Mixte de Recherche en Santé 707
(UMR S 707) Inserm-UPMC
Faculté de Médecine Pierre et Marie Curie, site Saint-Antoine
27, rue Chaligny / 75571 Paris cedex 12 / FRANCE
Tél. : 331 44 73 84 35 / Fax : 331 44 73 84 54
sentinelles@u707.jussieu.fr
<http://www.sentiweb.fr>

The " Réseau Sentinelles" or Sentinelles Network (a.k.a. French Communicable Diseases Computer Network) is a network of general practitioners, working throughout the metropolitan regions of France. This group includes 1308 physicians, including 353 involved in the clinical surveillance activity, enabling the achievement of weekly newsletters. This network is developed in cooperation between Inserm, Université Pierre et Marie Curie (UPMC) and the Institut de Veille Sanitaire (InVS).

Head of UMR S 707 Inserm-UPMC: Guy Thomas
Head of RS: Thomas Hanslik
Deputy head of RS: Thierry Blanchon
Electronic surveillance system manager: Christophe Arena
Information systems, Biostatistics: Clément Turbelin
Editor: Yves Dorléans

Regional branch	Head of network	Regional manager
Auvergne Rhône-Alpes	Marianne Sarazin	Solange Gonzalez-Chiappe
Centre	Thierry Prazuck	Cécile Saugeon
Franche-Comté	Jean-Pierre Ferry	Jean-Pierre Ferry
Méditerranée	Jean-Pierre Amoros	Christophe Arena Alessandra Falchi